

You are being asked to take part in the LSU Lung Cancer Study as a 'control' (an individual without lung cancer) to compare with 'cases' (individuals with lung cancer) if all of the following are true:

YES



60 YEARS OF AGE OR OLDER

YES



CURRENT OR FORMER SMOKER

YES



DO NOT HAVE A PERSONAL HISTORY OF LUNG CANCER

YES



DO NOT HAVE ANY RELATIVES WITH LUNG CANCER (LIVING OR DECEASED)

- * If you answered "yes" to all of the above, then you are eligible to participate as a control in this important research study.
- * You will be compensated for your participation.
- * All information provided will remain private and confidential.

Funds to support this study have been obtained from:

National Human Genome Research Institute (NHGRI)/ National Institutes of Health (NIH)

The Lung Cancer Study is part of the Genetic Epidemiology of Lung Cancer Consortium (GELCC):

- Baylor College of Medicine
- Harvard School of Public Health
- Karmanos Cancer Center
- Louisiana State University Health Sciences Center—New Orleans
- Mayo Clinic and Foundation
- National Human Genome Research Institute
- University of Cincinnati
- University of Toledo Medical Center

LSU Health
NEW ORLEANS

School of Medicine

Department of Genetics
533 Bolivar Street, CSRB 6-16
New Orleans, LA 70112

Toll-Free: 1-888-720-7757
Email: LungCaStudy@lsuhsc.edu
<http://www.medschool.lsuhs.edu/lungcancer>

THE LOUISIANA LUNG CANCER STUDY

'CONTROL' PARTICIPANT RECRUITMENT BROCHURE

LSU Health

Participants

Cases



With cancer

Controls



Without cancer

Louisiana State University Health Sciences Center—New Orleans

WHAT is the Lung Cancer Study?

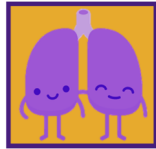
- * This is a research study aimed at finding the genes that may increase a person's risk of developing lung cancer.
- * This study also aims to understand how the genes interact with environmental factors in causing lung cancer.

WHAT is a Control?

- * A control is a person who has never been diagnosed with a certain disease that is being studied and who serves as a comparison—with a person who has been diagnosed with that particular disease (lung cancer).

HOW can I help?

- * By participating, you will help researchers better understand why some individuals are at a greater risk for developing lung cancer compared to others like yourself.
- * The research study may lead to better preventative strategies and individualized therapies for lung cancer.



WHAT can I expect?

- * Read and sign an informed consent form.
- * Fill out a brief, one-page questionnaire.
- * Donate a 36 mL blood sample (approximately 2½ tablespoons) drawn by one of our qualified technicians.

IS the information collected for this study protected?

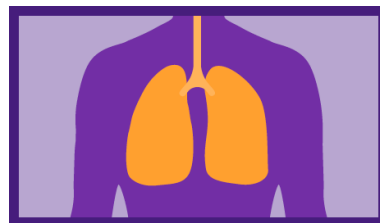
- * Yes, we are fully HIPAA compliant and have obtained a Certificate of Confidentiality from NIH.
- * All information collected is coded and stored in a confidential manner. No identifiable information is shared with anyone outside the study.

WILL I be compensated?

- * Yes, you will be compensated for your time.
- * Participants will be reimbursed with a \$20.00 ClinCard that may be used as a credit or debit card wherever they prefer.

WHO can participate?

- * Current or former smokers at least 60 years of age, and who have neither a personal nor a family history of lung cancer, are eligible to participate.
- * We also welcome participation from spouses (“married-in controls”) of lung cancer cases who do not have lung cancer or a family history of lung cancer.



WHEN can I participate?

- * The Lung Cancer Study holds control recruitment events at various facilities throughout the year. You may sign up on the day of the recruitment event.
- * Please contact us if you, your facility, or community would like to set up a control recruitment event.

CONTACT INFORMATION:

The Louisiana Lung Cancer Study
LSU Health Sciences Center—New Orleans
School of Medicine
Department of Genetics
533 Bolivar Street, CSRB 6-16
New Orleans, LA 70112

Principal Investigator:
Diptasri Mandal, PhD
Tel: 504-568-6156
Email: dmanda@lsuhsc.edu

Research Associate:
Angelle Bencaz, MSPH
Tel: 504-568-2216
Email: abenca@lsuhsc.edu

Toll-Free: 1-888-7320-7757
Fax: 504-568-8500
Email: LungCaStudy@lsuhsc.edu

**[http://www.medschool.lsuhs.edu/
lungcancer](http://www.medschool.lsuhs.edu/lungcancer)**